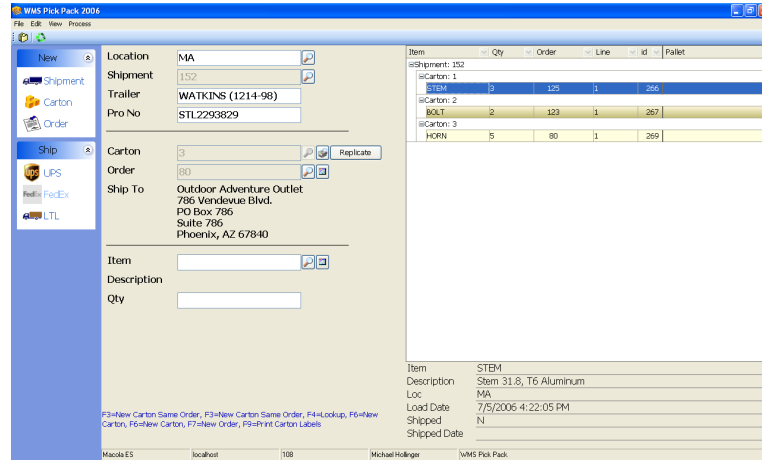


Pick / Pack with Bill of Lading

What is Pick Pack?

Pick Pack is an extension of the Macola Picking process supporting Pallet and Carton buildup for Truck load and LTL shippers.

Pick Pack allows you to visually see what pallets and/or cartons you are loading and shipping. You can also print a Bill of Lading for each shipment.



Highlights

Supported Versions

- Progression SQL
- Macola ES

Upgrading Macola ES

- No Upgrade Fee
- No Upgrade Process

Features

- Function Key for Quick Action
- Scanning and Verify
- Pallet Buildup
- Carton Buildup
- Carton on Pallet Buildup
- Carton/Pallet Replication
- Shipment Replication
- Carton Label Printing

Options

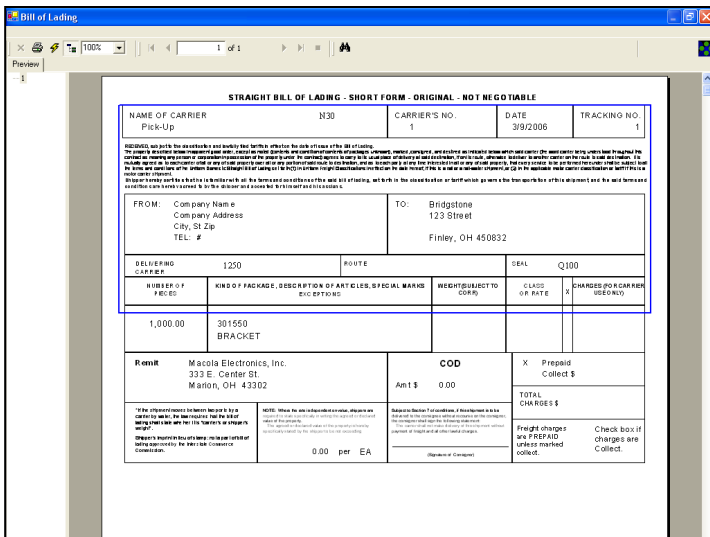
- Multi-Bin
- Ser/Lot
- Bin Staging

Truck Information

- Trailer Number
- Pro Number
- Seal
- Shipping Cost

How can Pick Pack help you?

WMS Pick Pack saves time & labor by automating the carton/pallet building process and providing an automated quality control functionality for pick -n- pack areas. WMS Pick Pack prevents picking errors from being shipped saving you time and money. WMS Pick Pack can capture each barcode scan associated with any pick & pack operation.



Crystal - Bill of Lading

After the confirm ship process the WiSys Pick Pack process presents your shipping information in a Bill of Lading document. WiSys provides a sample BOL for you to customize.

Customers who have EDI 856 – Advanced Shipping Notice (ASN) requirements can integrate with Macola's EDI provider, Data Masons using the Wisys EDI ASN option.