

Ship / Trac for UPS and FedEx

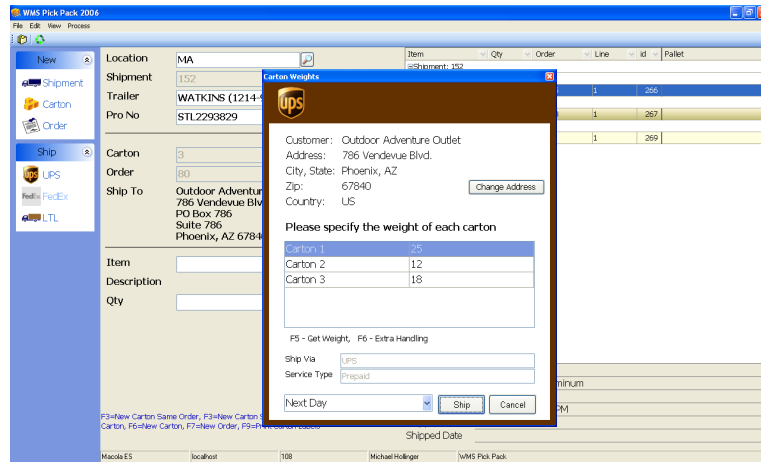
What is Ship Trac?

Ship Trac is an extension of WMS Pick Pack. Once you have built your cartons and pallets in Pick Pack Ship Trac allows you to ship via UPS and FedEx.

Ship Trac allows you to visually see what pallets and/or cartons you are loading and shipping as well ship via UPS and FedEx. The appropriate standardized labels are printed to your printer and you simply stick them on the box.

How can Ship Trac help you?

WMS Ship Trac saves time & labor by automating the carton/pallet building process and providing an automated quality control functionality for pick -n- pack areas. WMS Ship Trac prevents picking errors from being shipped saving you time and money. WMS Ship Trac can capture each barcode scan associated with any pick & pack operation. Once you build your shipment Pick Pack simply ships the inventory out of Macola and integrates with UPS and FedEx to print out the label with the correct Tracking number. The tracking number is then written back to Macola on the line comments and if you have manifest turned on you can capture the shipping costs. You can even add extra handling charges by carton.



Supported Versions

- Progression SQL
- Macola ES

Upgrading Macola ES

- No Upgrade Fee
- No Upgrade Process

Features

- Function Key for Quick Action
- Scanning and Verify
- Pallet Buildup
- Carton Buildup
- Carton on Pallet Buildup
- Carton/Pallet Replication
- Shipment Replication

Options

- Multi-Bin
- Ser/Lot
- Bin Staging
- EDI 856 Advanced Shipping Notice (ASN)

Truck Information

- Trailer Number
- Pro Number
- Seal
- Shipping Cost



Shipping Label

The shipping labels are standard UPS or FedEx label that can be reprinted in case of a printer malfunction or any other label disaster.

Customers who have EDI 856 – Advanced Shipping Notice (ASN) requirements can integrate with Macola’s EDI provider, Data Mations using the WiSys EDI ASN option.