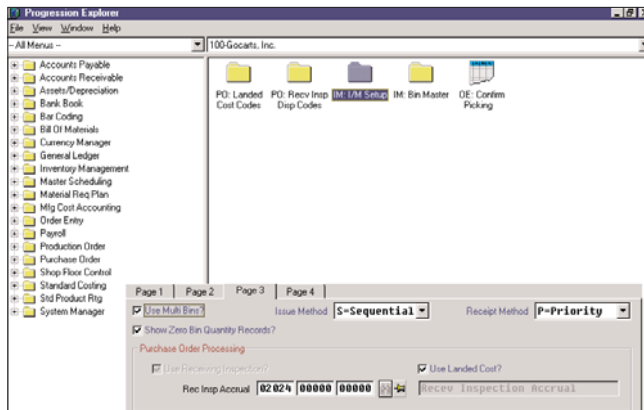


PROGRESSION'S 7.6 F9 IS A POWERFUL FINANCIAL REPORTING AND ANALYSIS TOOL THAT GIVES YOU INSTANT ACCESS TO YOUR GENERAL LEDGER DATA. IT WORKS LIKE AN ADD-IN TO YOUR WINDOWS SPREADSHEETS, EXTENDING THEIR FUNCTIONALITY WITH DDE LINKS. WITH F9, ANY CELL IN A SPREADSHEET CAN CONTAIN ANY BALANCE FROM ANY NUMBER OF ACCOUNTS, FOR ANY PERIOD IN ANY YEAR AND BUDGET. IT MAKES CREATING ANY FINANCIAL REPORT AS EASY AS TYPING ONE FORMULA. ANY REPORT BASED ON PROGRESSION'S GENERAL LEDGER



If you use Excel, Lotus 1-2-3, or Quattro Pro, you know how useful spreadsheets are for financial reporting. But do you know how easy it is to integrate these best-selling spreadsheets with Progression's General Ledger?

Progression's F9 provides you with a direct hot link between your preferred Windows spreadsheet and your Progression's General Ledger (G/L) files. Using Dynamic Data Exchange (DDE) technology, Progression's F9 gives you the most current numbers your G/L has to offer at the push of a button. No export/import procedures or macros are needed to bring in your Progression's G/L data!

Developed by Vancouver, B.C. -based Synex Systems Corporation, Progression's F9 gives you the ability to pull Progression's G/L data directly into your spreadsheet, providing seamless integration with Excel, Lotus 1-2-3, and Quattro Pro. And Progression's F9 does a lot more than that with sophisticated features that make spreadsheet reporting fast, easy and visually appealing. Progression's F9 turns your spreadsheet into a true Executive Information System.

#### YOU ALREADY KNOW HOW

With a click of the mouse, you can go from a single period income statement to a multi-period comparative income statement. And with a few more keystrokes, you can create spreadsheets complete with ratios and hot charts that change automatically when the Btrieve data does.

The best part is that if you know how to use a spreadsheet, you already know how to use virtually all the features of F9.

#### SIMPLE AND POWERFUL

At the heart of Progression's F9 is the G/L function, which returns the balance of any specified accounts. Simple parameters tell Progression's F9 to pull data from the current period, or from a range of accounts, or in any manner you specify. So complex reports grow logically and easily; functions are entered once and then copied any number of times to any number of cells. Headings are edited, and literally in seconds, a one-month report becomes a 12-month comparative!

Progression's F9's functions can read column headings and account numbers, so changing a report is often as easy as editing a single column (date) or row (account number). You can then use the Progression's spreadsheet to calculate sums, ratios, percentages, and variances. And when the numbers in G/L files change, the numbers in the reports change along with your graphs-automatically!

#### SOLID CONSOLIDATION

Consolidations are also headache-free with Progression's F9. Using statements within functions to specify the companies desired, Progression's F9 can consolidate Progression's G/Ls, including those that do not share the same account structure. It can even consolidate G/Ls that are in different accounting systems.

One report can contain complex multiple G/L details, including crucial comparative information regarding any number of separate divisions and companies. No other package addresses consolidation spreadsheet reporting needs as well as Progression's F9.



## BUDGET WRITE-BACK

The budgeting process requires you to review the past and project the future. What better way to do that than in a spreadsheet with F9 Progression's Budget Write-Back feature? Budget Write-Back allows you to create or edit budgets inside your spreadsheet and then write that budget information back into G/L for subsequent reporting.

Use last year's figures, copy an averaged month over a full year; add percentage increases, fine tune a few numbers. Progression's F9 can write the results back to General Ledger, making them available inside your Progression system and in all your other Progression's F9 spreadsheets!

## WHERE DID THIS NUMBER COME FROM...?

What happens when a number in a complex report looks suspicious-too high, too low, not quite right? Progression's F9 gives you this information automatically with its advanced drill-down abilities. Detailed account-by-account information can be displayed, and the drill-down dialog box allows you to slice and dice by department, profit center, or any of the pre-designated segments of your individual account code.

Because the results of any drill down can be sent to the clipboard or pasted to the spreadsheet, reports become even easier to build by using drill down. Simply pull in a main account and drill down on a desired segment; now you can pull in any of the related accounts that come up!

Drill down is a powerful Enterprise Information System (EIS) tool, capable of many more uses than simply looking at account numbers. Progression's F9 can take you all the way back to individual transactions to justify any balance it has pulled in, letting you verify the absolute accuracy of all numbers in the reports you build!

## ANALYZE

This feature will scan the entire spreadsheet and help determine if any accounts are missing or duplicated. This will save hours of time tracking down errors if the spreadsheet doesn't balance.

## REPORT WIZARD

Wizards give you quick access to new F9 reports. The wizard will allow you to select values for the horizontal and vertical axes of your report. Click the finish button and Progression's F9 will create a complete report with formatting, cell referencing, and F9 formulas.

## HOT BUTTONS

Maximizing ease-of-use, Progression's F9 Financial Reporter provides you with spreadsheet toolbar buttons that let you access the power of F9 without getting lost in pulldown menus.

## EVALUATION COPY

Call Exact Software North America today to receive an Evaluation Copy of Progression's F9. This is a full-featured copy of F9 for your examination, limited to using the sample data provided. Other demonstration options are also available. Contact Exact Software North America at the number below!

## MORE INFORMATION

For more information on how to put the power of Exact Software North America to work in your front office and mission critical back office, call today:

**800.468.0834**



**Exact Software North America**  
800 Brickstone Square  
Andover, MA 01810  
Tel: 888.877.5126  
Fax: 978.474.9317  
Sales: 800.468.0834 ext 550

Boston, MA  
Cambridge, ON  
Columbus, OH  
Houston, TX  
Los Angeles, CA  
Orlando, FL  
San Francisco, CA

[www.exactsoftware.com](http://www.exactsoftware.com)