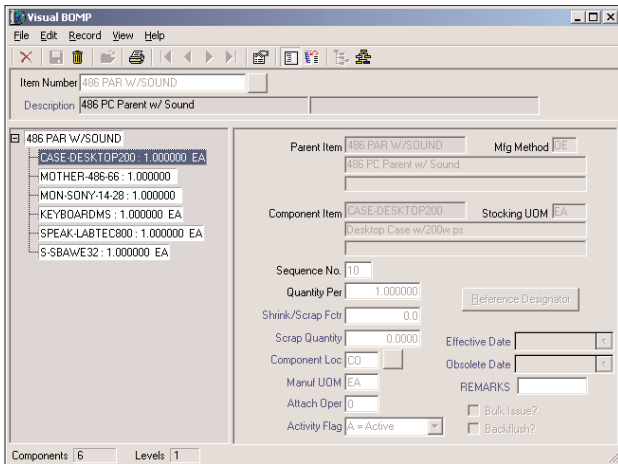


IF YOUR BUSINESS IS INVOLVED IN DISTRIBUTION OR LIGHT OR EXTENSIVE MANUFACTURING, YOU NEED A BILL OF MATERIAL PROCESSOR THAT CAN EFFECTIVELY MANAGE MULTI-LEVEL PRODUCT STRUCTURES. PROGRESSION'S BILL OF MATERIAL (BOM) CAN FILL THAT NEED.



*The Visual Bill Builder is a powerful tool that enables you to create, modify, delete, and manage your product structures in a visual environment using powerful drag and drop technology*

A strong bill of material processor can help manage and analyze the components and products your company produces. Progression's Bill of Material (BOM) module gives you those features. Plus, BOM is extremely flexible, incorporating powerful visual tools that integrate with Shop Floor Control (SFC) and Production Order Processing (POP) modules.

### PRODUCT STRUCTURE FILE MAINTENANCE

BOM's Product Structure File Maintenance establishes the link between a single inventory item and the components that comprise the finished good. BOM's Product Structure File offers you some distinct benefits, like Reference Designators. Each component includes a Reference Designator which allows you to detail exactly what it does and where it can be found. You also have the option to print Reference Designators on BOM's Indented Report or on production work orders. Plus, you can choose to display Reference Designators in the view function to quickly access information for further reporting power.

A product structure is created by specifying the relationships between pairs of items where one is a parent (an item that is

assembled with other components). A parent will have relationships with one or more component items. The same components may be used in many different assemblies within your manufacturing facility to construct different parent items. You specify each component-parent relationship in the Product Structure File. A Parent/Component Search feature available through BOM enables you to easily locate existing components for a specific parent item at that parent's level only.

BOM also provides you with the ability to define how much of each component is normally scrapped (shrinkage and/or scrap factor), allowing you to be more accurate in estimating component usage.

In addition, BOM tracks component level effectivity dates and default locations for each component.

Various safeguards assure valid data. For example, BOM prevents you from making an item a component of itself, or from using an item that is not defined in the Inventory Management (I/M) package.

### FEATURE/OPTIONS CONFIGURATION

There may be times when you find it appropriate to configure a product to meet a customer's unique requirements. The Feature/Options Configuration application enables you to establish these rules-based configurations for use in the order entry process.

This BOM application also enables you to analyze the features (or parent items) along with options (or components). This gives you the flexibility you need to configure your products with all of the options a customer may need. Plus, Feature/Options Configuration enables your system to maintain top-speed performance by eliminating the necessity to specify a separate bill for each minor option your company offers on an individual product.



### **BILL OF MATERIAL VIEW**

BOM's View function allows you to easily display the bill of material for any specified item. There is an option to "blow through" phantom items, showing components that are either stocked or controlled, with the first level displaying components normally stocked. You can also optionally display obsolete or forecasted items, along with the Reference Designators.

### **SUMMARIZED BILL OF MATERIAL**

The Summarized Bill of Material details all the components of a specified parent. It is called "summarized" because each component is shown only once, summarized by quantity-required (per this parent). This summary detail drills down to the lowest level that the component appears in the parent's structure. This is the classical parts list where each part is listed once along with the total quantity required to make one parent. One, a few, or all parent items may be selected to print on this report. You also have an option to print only purchased items or a summary to limit the level of components.

### **COSTED BILL OF MATERIAL**

This feature allows you to print a Costed Bill of Material for any range of parent items you select. You also have the option to choose whether or not to update the I/M Item/Location File's last, standard, or average cost. This update option only appears when the inventory cost method is last, standard, or average.

### **GROSS REQUIREMENTS REPORT**

BOM provides the ability to analyze how future orders for parent items will impact inventory levels. Select a quantity of a parent item or items, and print a report showing component requirements at all levels. At the same time, the report displays inventory status information to compare component requirements to what is currently available and on order.

### **POWERFUL VISUAL BILL BUILDER**

The Visual Bill Builder is a powerful tool that enables you to create, modify, delete, and manage your product structures in a visual environment using powerful drag and drop technology. You can view your Bills of Material in a number of different formats.

### **MORE INFORMATION**

For more information on how to put the power of Exact Software North America to work in your front office and mission critical back office, call today:

**800.468.0834**



**Exact Software North America**  
800 Brickstone Square  
Andover, MA 01810  
Tel: 888.877.5126  
Fax: 978.474.9317  
Sales: 800.468.0834 ext 550

Boston, MA  
Cambridge, ON  
Columbus, OH  
Houston, TX  
Los Angeles, CA  
Orlando, FL  
San Francisco, CA

[www.exactsoftware.com](http://www.exactsoftware.com)